



Elevating the
**Strength &
Shine**

| STAINLESS STEEL
| 316/304 MODULAR RAILING & ARCHITECTURAL
| HARDWARE PRODUCTS

ABOUT US



Kelco, founded in **2014** by the visionary **Mr. Bharat Kakadiya**, is a distinguished enterprise situated in Rajkot, Gujarat, renowned as a thriving center for stainless steel Architectural Hardware Products in India. Committed to delivering unrivalled excellence, we have emerged as a leading manufacturer and exporter of top-tier Architectural Hardware and Railing products.

Our comprehensive range of offerings includes meticulously crafted **Handrail & Balustrade systems, Pull Handles, Lever Handles, Hinges, Lock & Pin Cylinders, and Door Accessories**, all constructed from premium-grade, corrosion-resistant **Stainless Steel 316/304 Grade** materials. Impeccable attention to detail is guaranteed, as our products are meticulously manufactured under a single roof, adhering to the **ISO 9001:2015** quality management systems.

At Kelco, we boast an in-house Research & Development Division dedicated to driving innovation and the creation of distinctive designs and products. Our highly skilled workforce and cutting-edge technology enable us to produce precise and flawlessly finished goods, surpassing industry standards.

To ensure the supply of superior quality products, we diligently adhere to international standards in our rigorous quality control systems. Our commitment to providing excellence in service is facilitated by efficient and swift communication channels, enabling us to deliver timely feedback and effective solutions to our esteemed clients.

We take pride in our global reach, exporting our products to esteemed markets such as the **USA, Canada, UK, Belgium, UAE, Kuwait, Oman, Qatar, Seychelles, Tanzania, Uganda, Mozambique, Mauritius, Fiji, Maldives, Nepal** and beyond.

FEATURES OF MODULAR RAILING SYSTEM

1. Our Kelco modular railing uses high-quality SS 316 Grade material with 1.5mm wall thickness and SS 304 Grade material with 1.2mm wall thickness for superior durability.
2. No need for on-site welding or cutting as all parts are pre-finished at our factory.
3. Achieve a unique finish with our advanced factory manufacturing process.
4. Say goodbye to site damage during railing installation and save on costly floor repairs.
5. Our modular system allows for easy dismantling and re-installation, saving you future replacement expenses.

Strengthened joints with stainless steel bushings ensure added durability.



Perfect 90-degree railing bend for a visually appealing look.

High tensile brass anchor and SS fasteners provide extra strength for secure mounting.



PVD Coating - Railing and Hardware

The Physical Vapour Deposition (PVD) process sees Railing & hardware placed into a vacuum chamber and given a negative charge, the coating is then vapourised and given a positive charge, displacing atom by atom onto the surface of the railing & hardware.

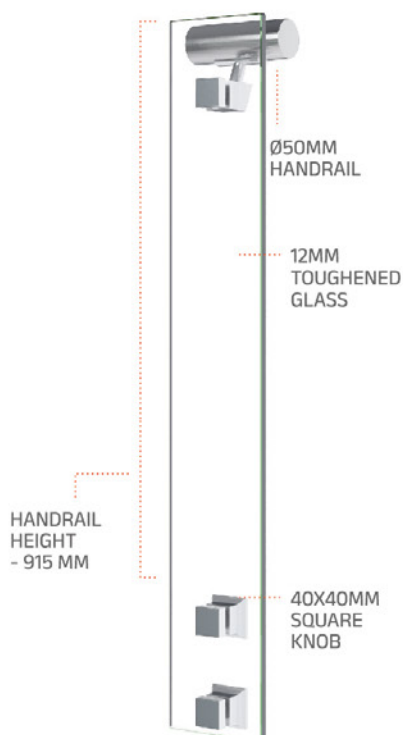
Side Mounted Designer Square Knob with Glass



SSD645-S4-T12



Finish : Satin
PVD Finish :
Gold, Rose Gold

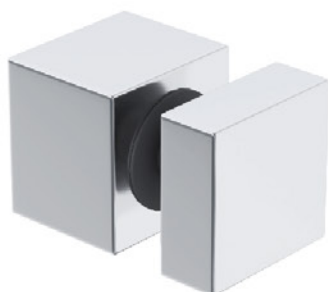


Elevate
your
Choice
a hint of
sophistication

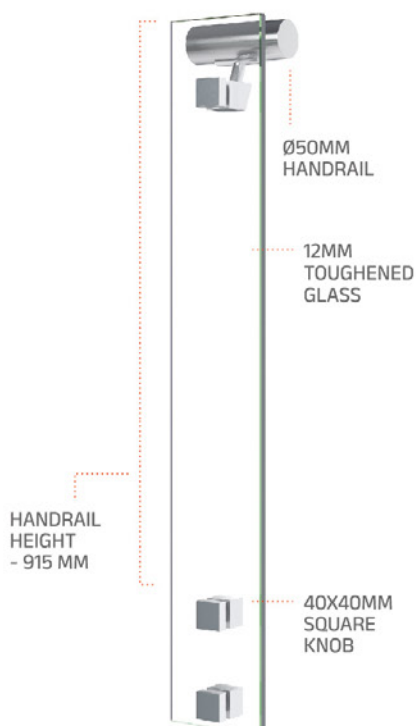
Side Mounted Square Knob with Glass



SSK645-S4-T12



Finish : Satin
PVD Finish :
Gold, Rose Gold



Elevate
your
Choice
a dash of
refinement

"O-WELL" Spigot with Glass

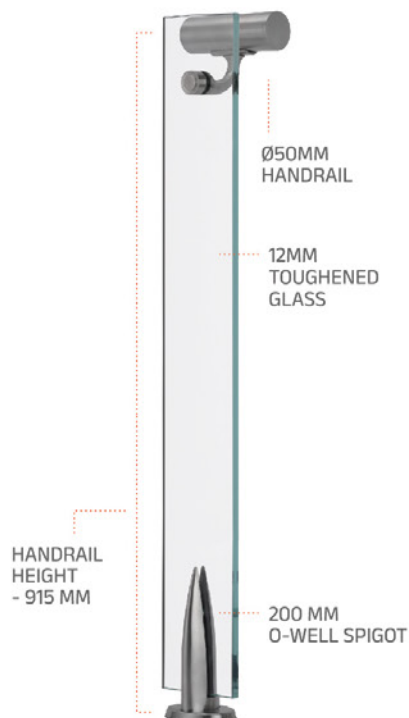
Kelco[®]
TRUST WE BUILD



TFW645-F4-T12



Finish : Satin
PVD Finish :
Gold, Rose Gold



Elevate
your
Choice
a twist of
opulence

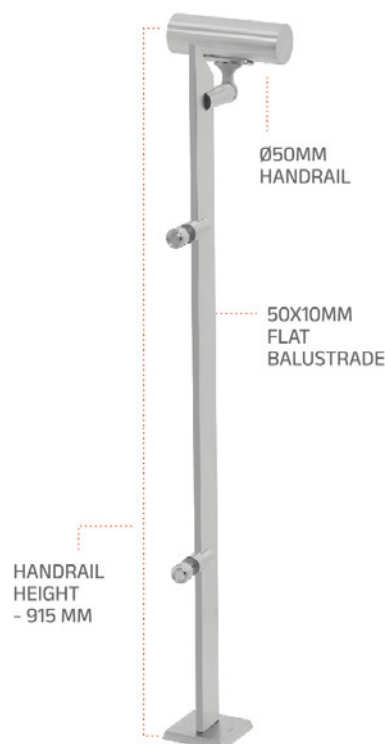
Top Mounted Flat Balustrade with Glass



TFA655-F1-T10



Finish : Satin
PVD Finish :
Gold, Rose Gold



Elevate
your
Choice
with
a touch of
elegance

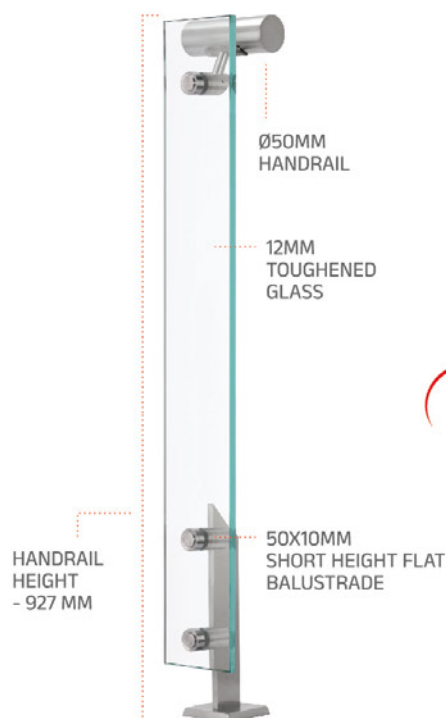
Top Mounted Short Height Flat Balustrade with Glass



TFZ655-F2-T12



Finish : Satin
PVD Finish :
Gold, Rose Gold



Elevate
your
Choice
with
sophisticated
architectural
accents

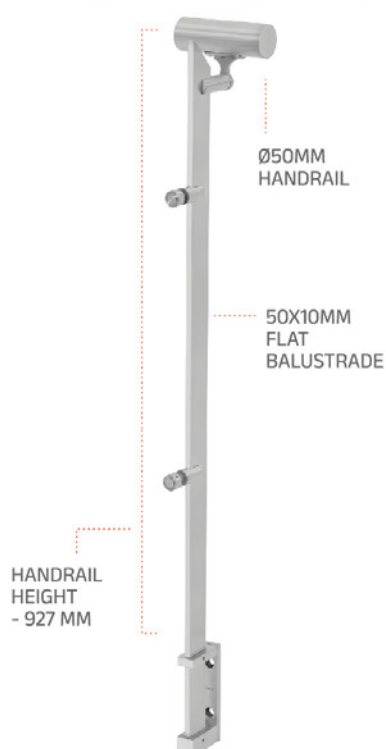
Side Mounted Flat Balustrade with Glass



SFA655-F1-T10



Finish : Satin
PVD Finish :
Gold, Rose Gold



Elevate
your
Choice
with
exquisite and
timeless
craftsmanship

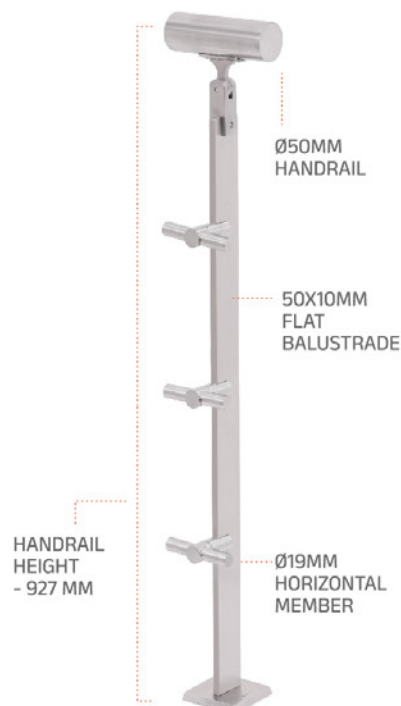
Top Mounted Flat Balustrade with Horizontal Members



TFB655-F3-319



Finish : Satin
PVD Finish :
Gold, Rose Gold



Elevate
your
Choice
with
refined and
stylish design
elements

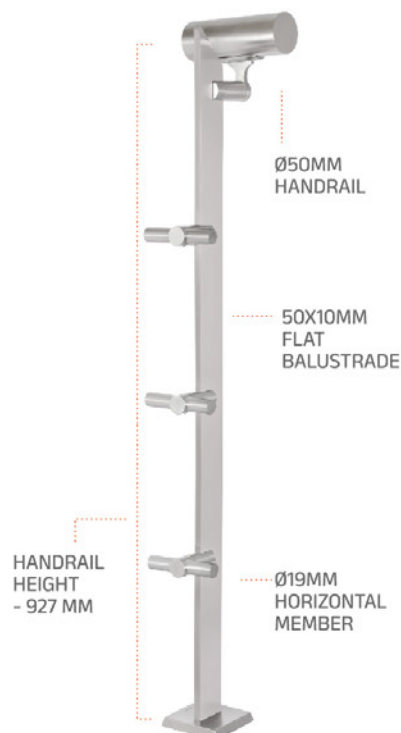
Top Mounted Flat Balustrade with Horizontal Members



TFB655-F1-319



Finish : Satin
PVD Finish :
Gold, Rose Gold



Elevate
your
Choice
with
premium-grade
decorative
enhancements

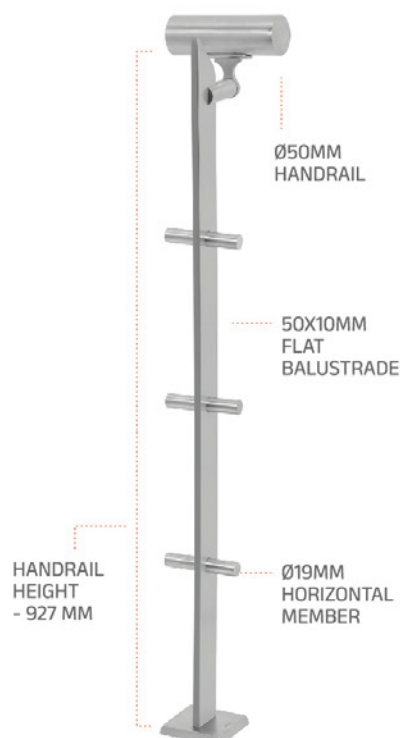
Top Mounted Flat Balustrade with Horizontal Members



TFC655-F1-319
(Only for Straight Area)

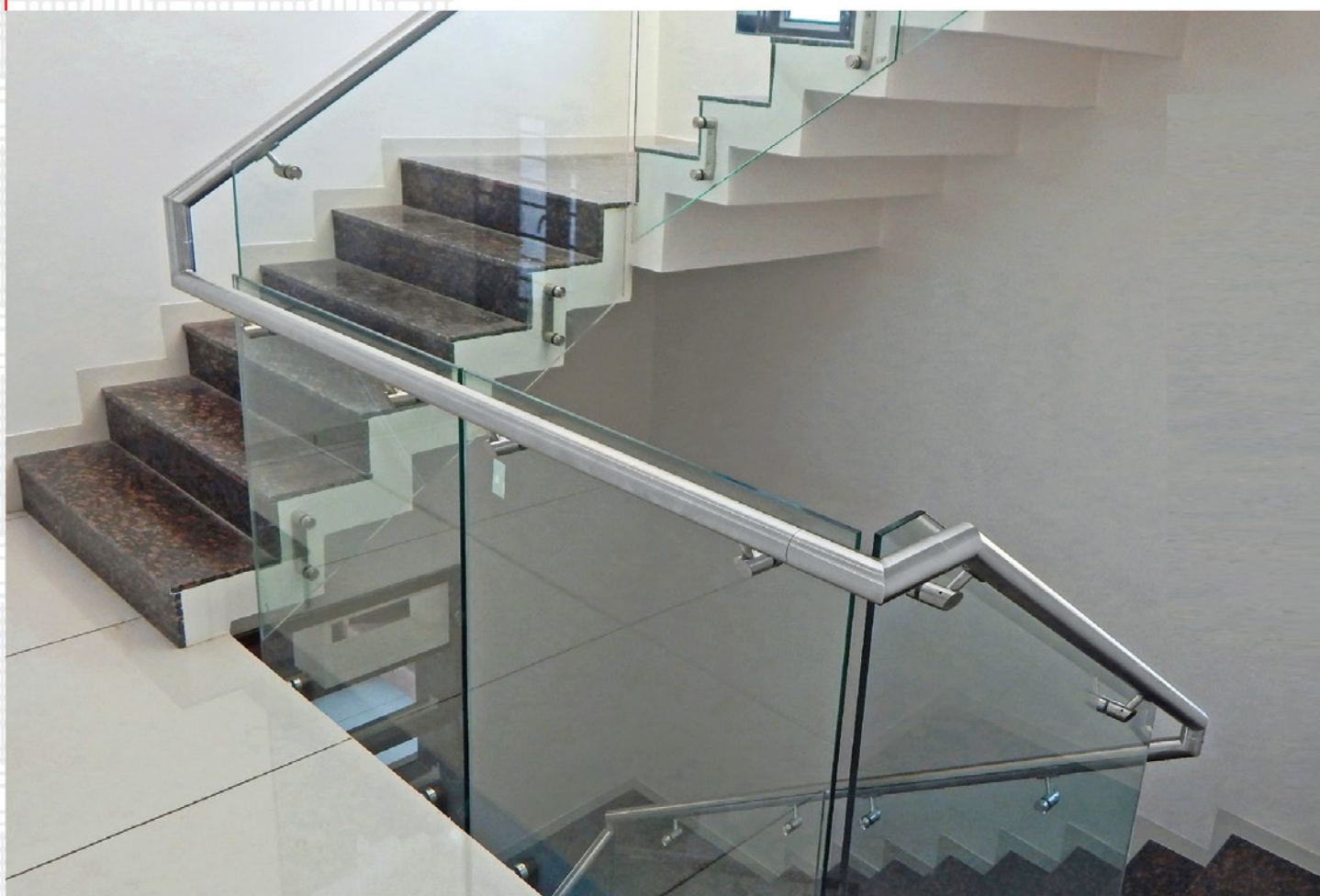


Finish : Satin
PVD Finish :
Gold, Rose Gold



Elevate
your
Choice
with
luxurious and
impeccable
finishing
touches

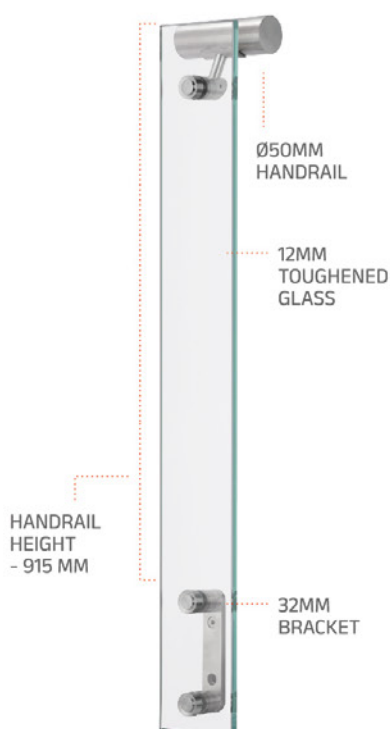
Side Mounted 32mm Bracket with Glass



SKB625-R2-T12



Finish : Satin
PVD Finish :
Gold, Rose Gold



Elevate
your
Choice
with
the epitome
of refined
aesthetics

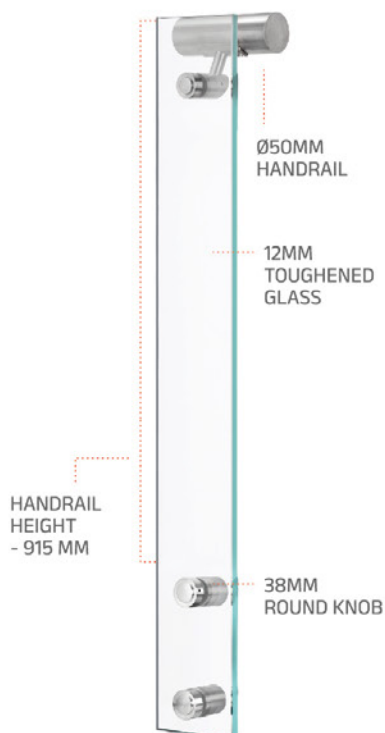
Side Mounted 38mm Round Knob with Glass



SRK635-R2-T12



Finish : Satin
PVD Finish :
Gold, Rose Gold



Elevate
your
Choice
with
a seamless blend
of beauty and
functionality

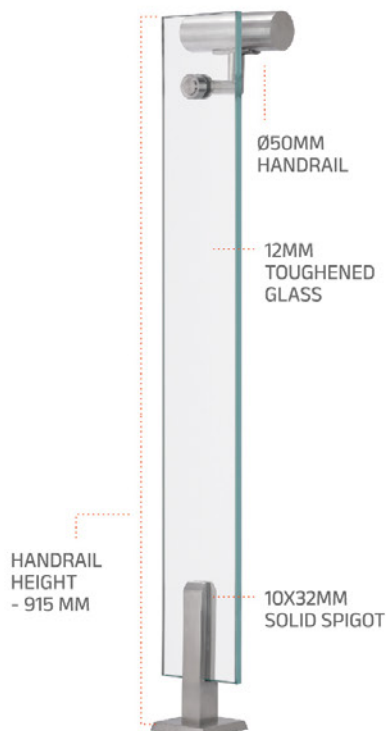
Top Mounted 32x191mm Solid Spigot with Glass



TFX625-F4-T12



Finish : Satin
PVD Finish :
Gold, Rose Gold



Elevate
your
Choice
with
tastefully
curated
architectural
details

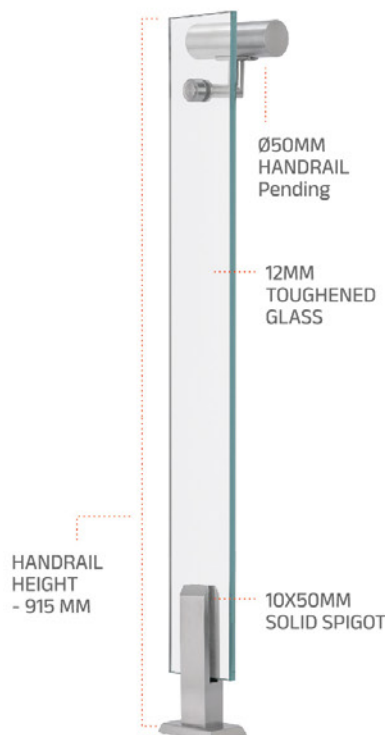
**Top Mounted
50x210mm Solid
Spigot with Glass**



TFY655-F4-T12



**Finish : Satin
PVD Finish :
Gold, Rose Gold**



Elevate
your
Choice
with
premium-grade
embellishments
that impress

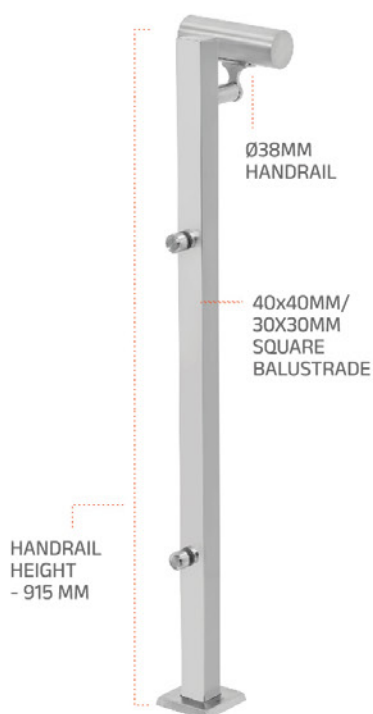
Top Mounted Square Balustrade with Glass



TSB633-S1-T10

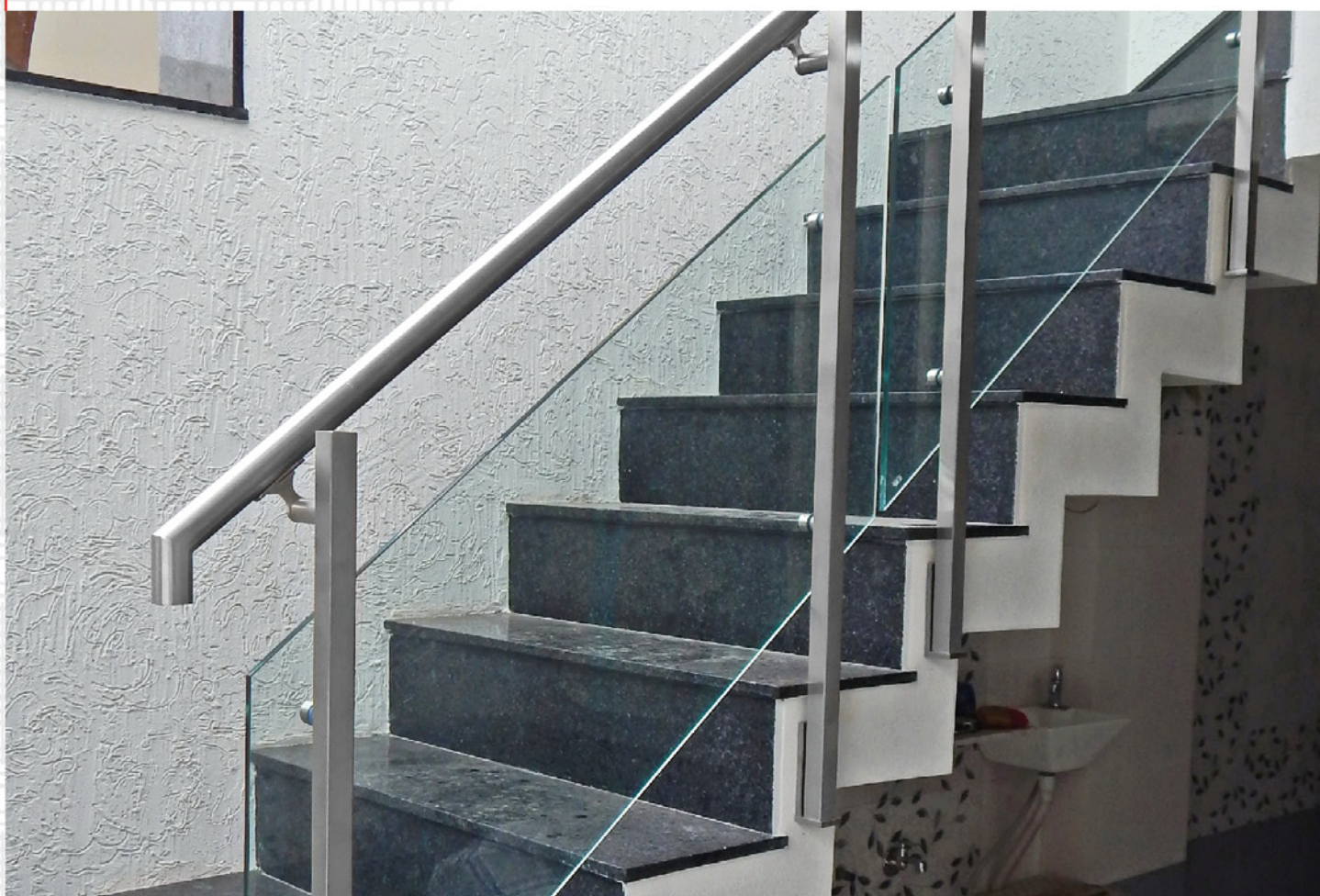


Finish : Satin
PVD Finish :
Gold, Rose Gold



Elevate
your
Choice
with
meticulous
attention
to detail

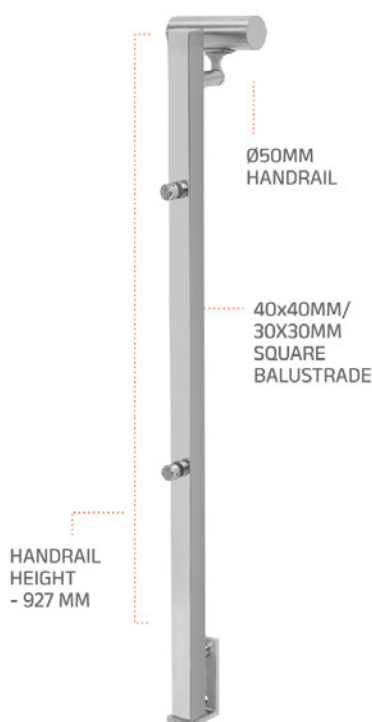
Side Mounted Square Balustrade with Glass



SSC635-S1-T10



Finish : Satin
PVD Finish :
Gold, Rose Gold



Elevate
your
Choice
with
the finest
finishes for
a luxurious
ambiance

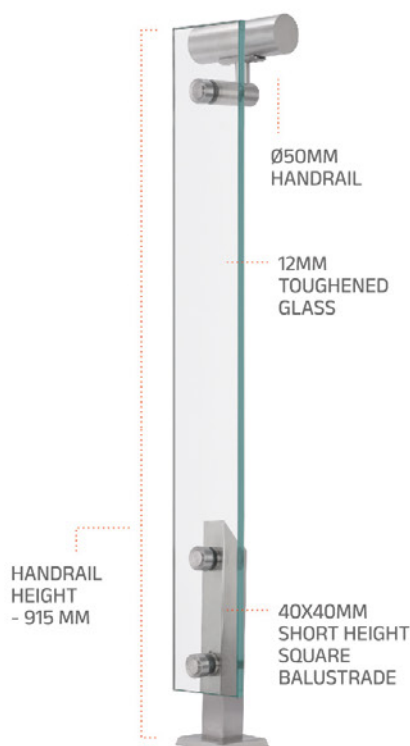
Top Mounted Short Height Square Balustrade with Glass



TSZ645-S2-T12



Finish : Satin
PVD Finish :
Gold, Rose Gold



Elevate
your
Choice
with
bespoke accents
that exude
sophistication

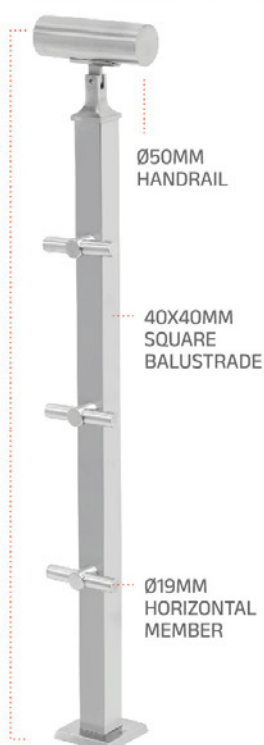
Top Mounted Square Balustrade with Horizontal Members



TSA645-S3-319



Finish : Satin
PVD Finish :
Gold, Rose Gold



Elevate
your
Choice
with
captivating
design elements
that inspire

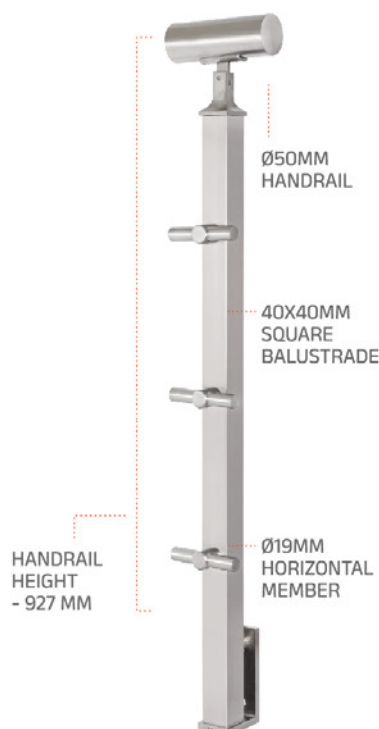
Side Mounted Square Balustrade with Horizontal Members



SSA645-S3-319



Finish : Satin
PVD Finish :
Gold, Rose Gold



Elevate
your
Choice
with
stunning
architectural
focal points

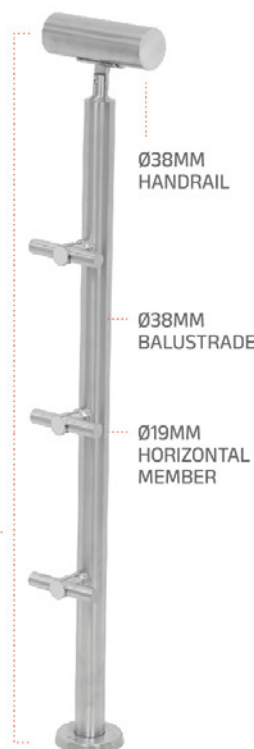
Top Mounted Round Balustrade with Horizontal Members



TRA633-R3-319

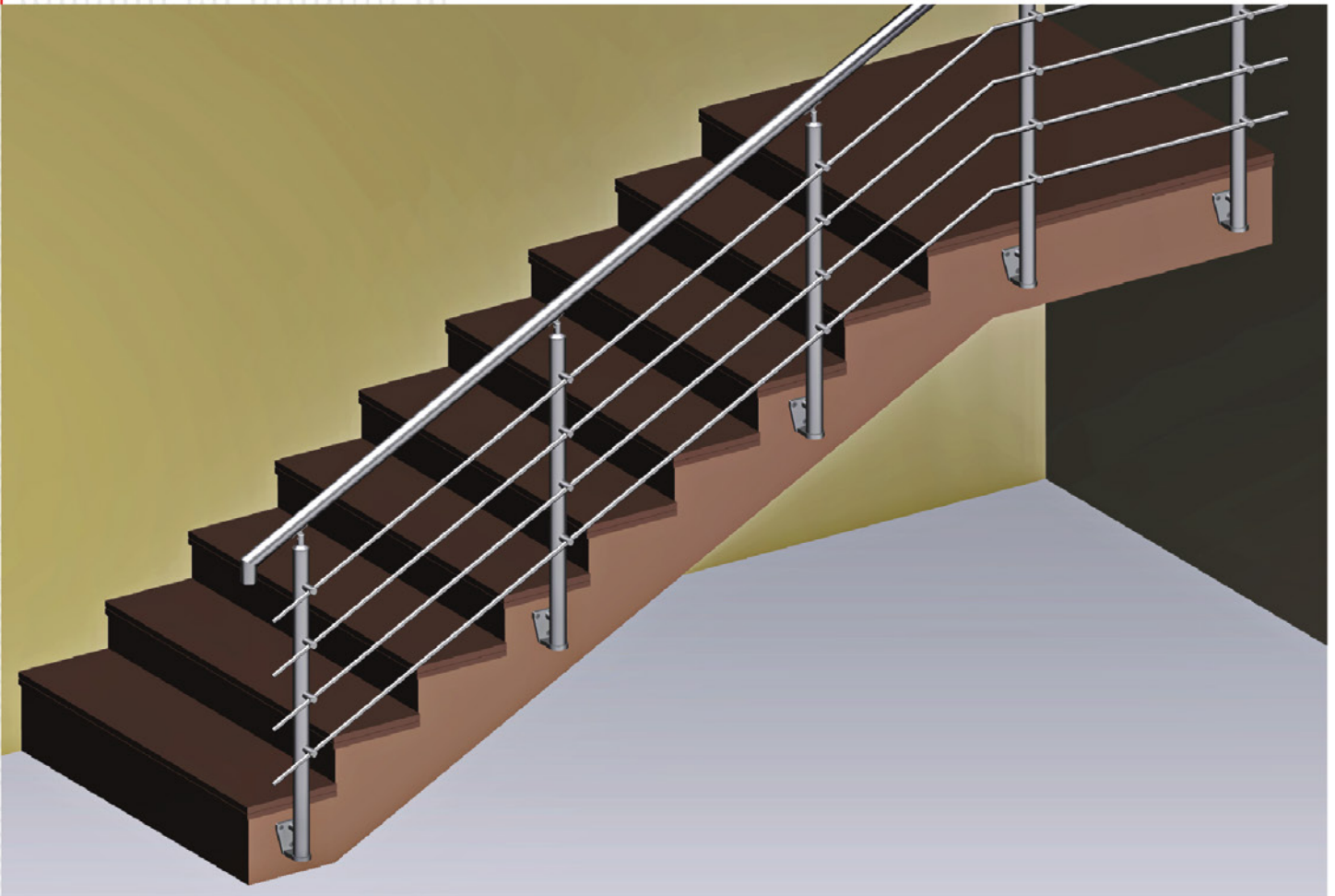


Finish : Satin
PVD Finish :
Gold, Rose Gold



Elevate
your
Choice
with
statement pieces
that define
modern luxury

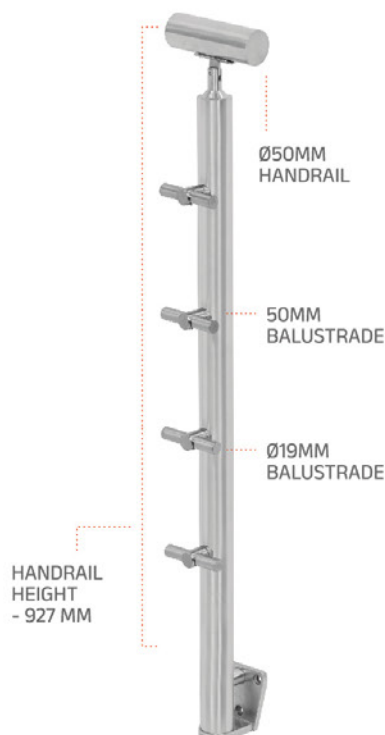
Side Mounted Round Balustrade with Horizontal Members



SRA655-R3-419



Finish : Satin
PVD Finish :
Gold, Rose Gold



Elevate
your
Choice
with
handcrafted
details that
reflect
excellence

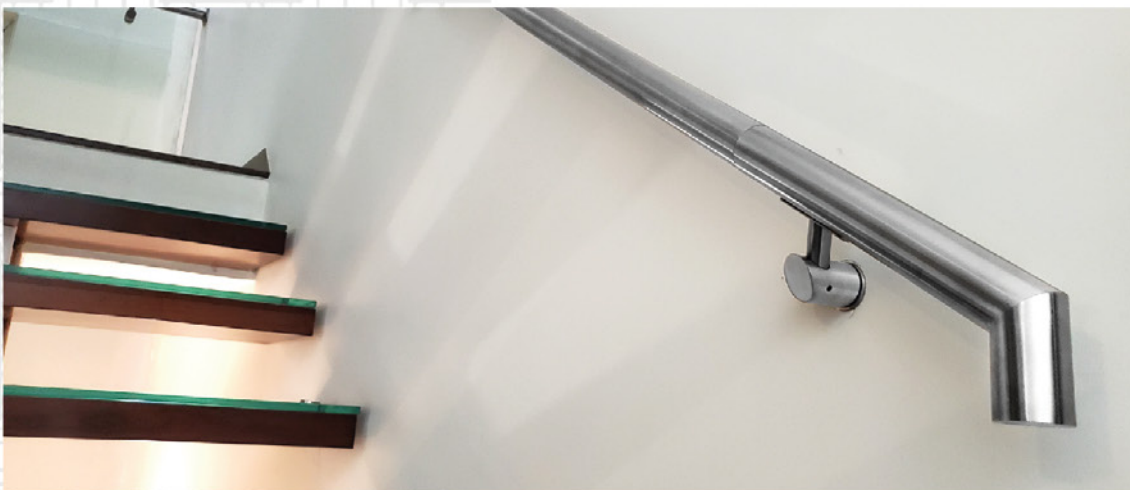
Wall Mounted Railing



WR65-W1



WR65-W2



WR65-W2

Wall Mounted Railing



WR65-W4

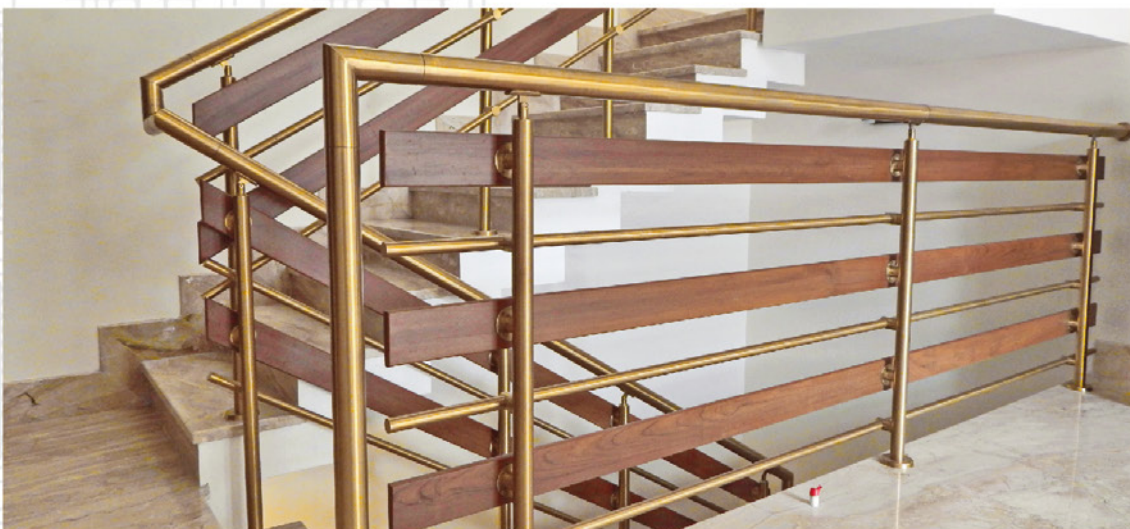


WR65-W5

Finish : Satin
PVD Finish :
Gold, Rose Gold

Elevate
your
Choice
with
exquisite
finishing
solutions

Customized Railing



Beyond
ordinary



Pull Handle



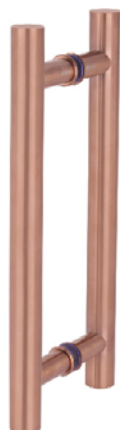
FINISH
SATIN



FINISH
PVD NICKEL



FINISH
PVD BLACK



FINISH
PVD ROSE GOLD



FINISH
PVD GOLD



FINISH
PVD BRASS

GHRH

LENGTH (C/C)
200 TO 450MM
200 TO 600MM
300 TO 600MM
450 TO 2100MM
600 TO 1800MM

DIA
19MM
22MM
25MM
32MM
38MM

Pull Handle



GHRD

FINISH	LENGTH (C/C)	DIA
SATIN	150 TO 300MM 200 TO 450MM 300 TO 600MM 450 TO 1200MM	19MM 22MM 25MM 32MM



GHSC

FINISH	LENGTH (C/C)	DIA
SATIN	200 TO 600MM 300 TO 900MM 450 TO 1800MM	20x20MM 25x25MM 30x30MM



GHRC

FINISH	LENGTH (C/C)	DIA
SATIN	200 TO 300MM 300 TO 600MM 450 TO 1800MM	22MM 25MM 32MM



GHRHC

FINISH	LENGTH (C/C)	DIA
SATIN	300 TO 1800MM	40x20MM



GHRH45D

FINISH	LENGTH (C/C)	DIA
SATIN	300 TO 1800MM	32MM



GHSH

FINISH	LENGTH (C/C)	DIA
SATIN	200 TO 600MM 300 TO 900MM 450 TO 1800MM	20x20MM 25x25MM 30x30MM

PVD Finish : Gold, Rose Gold, Brass, Black
Powder Coating : Black

Pull Handle



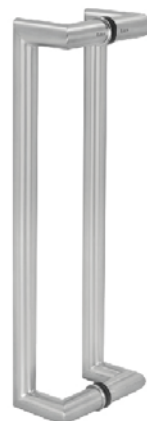
GHBC

FINISH	LENGTH (C/C)	DIA
SATIN	300 TO 600MM 450 TO 1200MM	25MM 32MM



GHBH

FINISH	LENGTH (C/C)	DIA
SATIN	300 TO 600MM 450 TO 1200MM	25MM 32MM



GHRG

FINISH	LENGTH (C/C)	DIA
SATIN	300 TO 600MM 450 TO 1800MM	25MM 32MM



GHFH

FINISH	LENGTH (C/C)	DIA
SATIN	300 TO 1200MM	10x50MM



SHRD

FINISH	LENGTH (C/C)	DIA
SATIN	150 X 400MM 150 X 450MM 200 X 400MM 150 X 400MM 150 X 450MM 200 X 400MM 200 X 450MM	19MM 19MM 19MM 22MM 22MM 22MM 22MM

PVD Finish : Gold, Rose Gold, Brass, Black
Powder Coating : Black

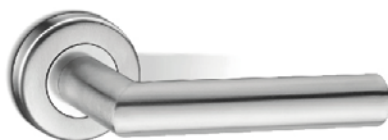
Lever Handle



LHRD

FINISH
SATIN

DIA
19MM
22MM



LHRL

FINISH
SATIN

DIA
19MM
22MM



LHRA

FINISH
SATIN

DIA
19MM
22MM



LHRH

FINISH
SATIN

DIA
22MM



LHRF

FINISH
SATIN

DIA
22MM



LHRE

FINISH
SATIN

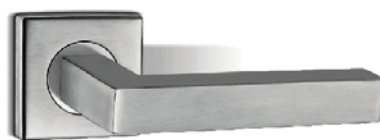
DIA
22MM



LHRC

FINISH
SATIN

DIA
22MM



LHSL

FINISH
SATIN

DIA
20MM



LHFB

FINISH
SATIN

DIA
SOLID

Lever Handle



LHFE FINISH
SATIN DIA
SOLID



LHFA FINISH
SATIN DIA
SOLID



LHFJ FINISH
SATIN DIA
SOLID



LHFL FINISH
SATIN DIA
SOLID



LHFK FINISH
SATIN DIA
SOLID



LHFM FINISH
SATIN DIA
SOLID



LHRD-PC FINISH
SATIN DIA
19MM
22MM



LHRA-PA FINISH
SATIN DIA
19MM
22MM



LHSL-PB FINISH
SATIN DIA
20MM

Mortise Lock & Pin Cylinder



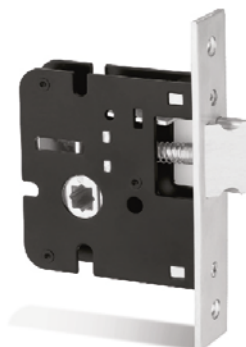
LBA-85-45S

LOCK BODY
BACK SET : 45, 60MM



LBB-85-45S

3 BOLT LOCK BODY
BACK SET : 45, 60MM



LTA-45S

LATCH
BACK SET : 45MM



DLA-45S

DEAD BOLT
BACK SET : 45MM



PCC5-60-2K

PIN CYLINDER
BOTH SIDE KEY
SIZE : 60,70,80,90MM



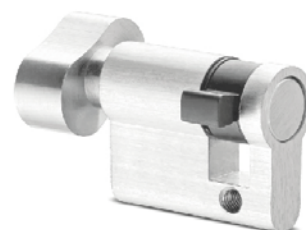
PCC5-60-KN

PIN CYLINDER
KEY & KNOB
SIZE : 60,70,80,90MM



PCN-60-SN

BATHROOM PIN CYLINDER
SLOT & KNOB
SIZE : 60,70,80MM



DLA-45S

HALF PIN CYLINDER
SINGLE SIDE KNOB
SIZE : 35,40,45MM

Door Accessories



BHR6-0

BUTT HINGES WITHOUT BEARING
75X70X2.5MM, 100X70X2.5MM
100X75X3MM, 125X75X3MM
150X75X3MM



BHR6-2

BUTT HINGES WITH 2 BEARINGS
75X70X2.5MM, 100X70X2.5MM
100X75X3MM, 125X75X3MM
150X75X3MM



BHR6-4

BUTT HINGES WITH 4 BEARINGS
100X70X2.5MM, 100X75X3MM
125X75X3MM, 150X75X3MM



DS131

DOOR STOPPER
FINISH : SATIN



DC111

DOOR CLOSER
WEIGHT CAPACITY : 80 KGS



DC112

DOOR CLOSER
WEIGHT CAPACITY : 110 KGS



DC113

DOOR CLOSER
WEIGHT CAPACITY : 120 KGS

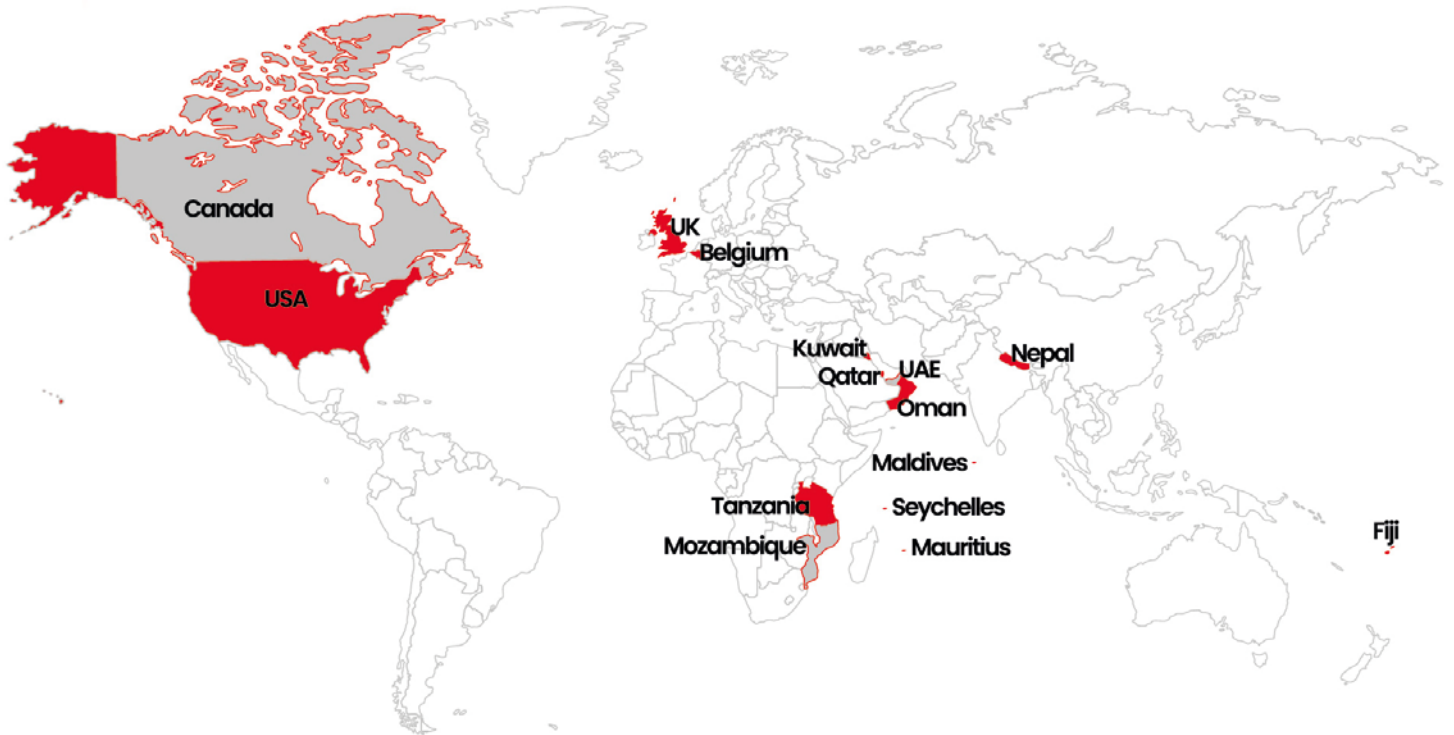


DC114

DOOR CLOSER
WEIGHT CAPACITY : 120 KGS

NOTES

Export Countries



Kelco Industries

Plot No. 214/A, Aji G.I.D.C., N-Road, Rajkot - 360003 (Gujarat) INDIA

Mo. : +91 99789 27113

E-mail : info@kelcoindia.com | Web : www.kelcoindia.com



9001:2015
CERTIFIED COMPANY



INDIA 500
BEST
BRAND

for Quality excellence